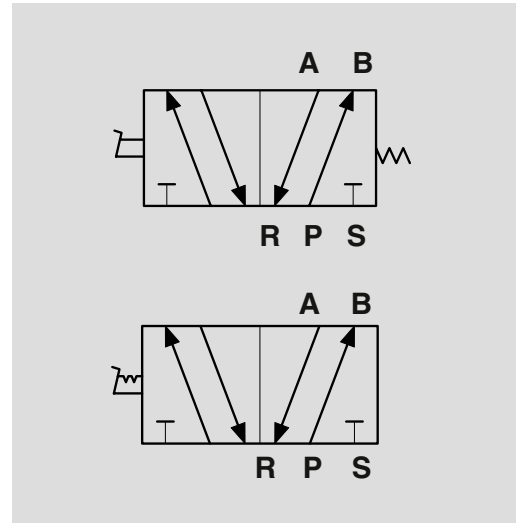




Foot Pedal Series
www.AirCylindersDirect.com

ENM Series Pedal Valve

- 5 port 4-way valve
- Nylon shell & steel reinforced base plate
- Die cast zinc alloy valve body
- Spring return & detented models
- Large opening for foot operation



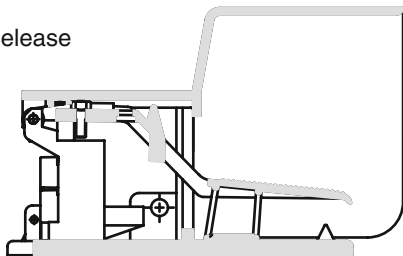
Technical Data

PORTS (NPTF)	1/4" SPRING	1/4" PEDAL
Cv		0.8
Flow Capacity	22.74 SCFM (800 NI/min)	
Maximum Operating Pressure	145 PSIG (10 Bar)	
Temperature Range	14°F to +155°F ambient (-10°C to +70°C ambient)	
Fluid Temperature Range	14°F to +155°F ambient (-10°C to +70°C ambient)	

MODEL NUMBER	TYPE	CONTROL	RETURN	PORT (BSP)	PEDAL FORCE N (lbs)	MASS kg (lbs)
E-NAM500100N0000		Pedal	Spring	1/4"	20 (4.5)	1.45 (3.2)
E-NAM500400N0000		Pedal	Pedal	1.4"	20 (4.5)	1.52 (3.4)

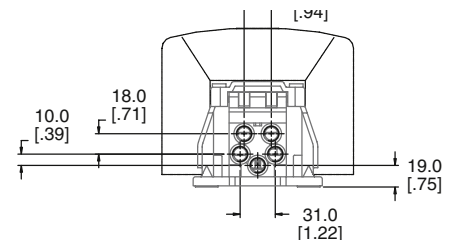
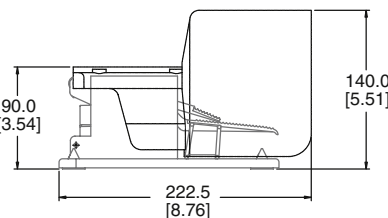
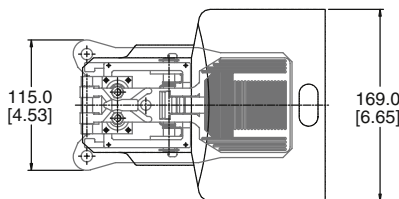
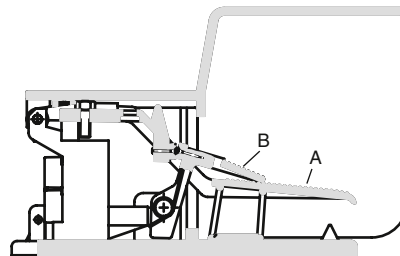
Spring Return Pedal

Press & Release Operation



Detented Operation Pedal

Press main pedal A to actuate & lock. Press lock pedal B to release



Dimensions = inches (in parentheses) = mm



Call Toll Free: **1-866-404-5300**

The Online Answer to Air Applications

Standard Cylinder Lines



Round Body Interchangeable NR Series

[>>> PURCHASE ONLINE <<](#)



NFPA Interchangeable EN Series

[>>> PURCHASE ONLINE <<](#)



ISO/VDMA Interchangeable EV Series



Metric Compact Interchangeable MCI Series



Large Bore NFPA Interchangeable ENL Series



Steel Body NFPA Interchangeable ENS Series

Accessories



Cylinder Accessories

[>>> PURCHASE ONLINE <<](#)



Fittings and Flow Controls

[>>> PURCHASE ONLINE <<](#)



Air Line Tubing and Accessories

[>>> PURCHASE ONLINE <<](#)

Custom Cylinders

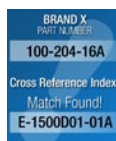


Custom Cylinders "Your" Series

Helpful Tools



CAD Models



Cross Reference Program



Calculators



www.AirCylindersDirect.com
1-866-404-5300
sales@aircylindersdirect.com

